

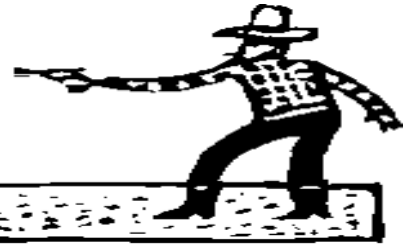
アルファベットの小文字の認識



Tracing practice for the lowercase letter 'm'. The first 'm' has numbered arrows indicating stroke order: 1 (downward vertical stroke), 2 (top curve), and 3 (bottom curve). Two more faint 'm's are provided for tracing.

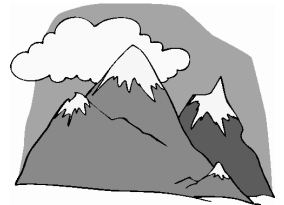


VS



Tracing practice for the lowercase letter 'n'. The first 'n' has numbered arrows indicating stroke order: 1 (downward vertical stroke), 2 (top curve), and 3 (bottom curve). Two more faint 'n's are provided for tracing.

1. usic



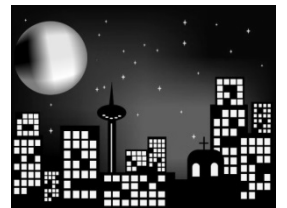
2. ight



3. onster



4. ountain



5. ose

